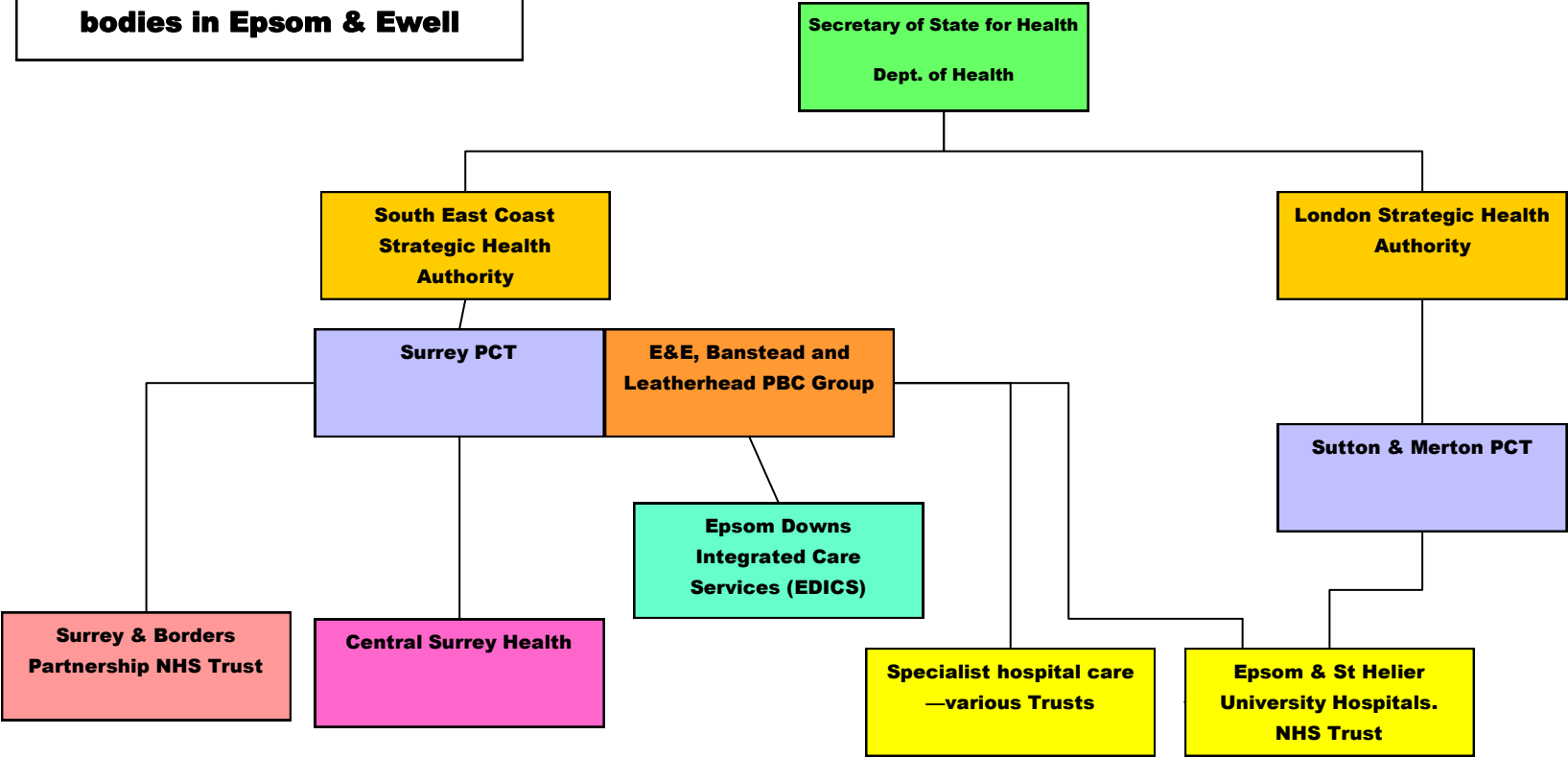


**Schematic representation of relationships between NHS bodies in Epsom & Ewell**



Organisation	Area covered	Function
<b>Department of Health</b>	<b>UK</b>	<b>The Department of Health (DH) is the government department with the task to improve the health and wellbeing of people in England.</b>
<b>South East Coast Regional Health Authority (RHA)</b>	<b>Kent, Surrey and Sussex.</b>	<b>Budget c.£300m—funded by Dept. of Health</b> <b>Non-executive Board members appointed by NHS Appointments Commission</b> <b>Purpose</b> <ul style="list-style-type: none"> <li>• <b>strategic leadership;</b></li> <li>• <b>organisational and workforce development; and</b></li> <li>• <b>ensuring local systems operate effectively and deliver improved performance</b></li> </ul> <b>The aim is to reduce health inequalities and improve health whilst maintaining financial sustainability</b>
<b>London Strategic Health Authority ('NHS London')</b>	<b>Greater London</b>	<b>Provides strategic leadership for all NHS health services in London, with overall responsibility for the performance of 31 PCTs, 25 acute trusts, four mental health trusts and the London Ambulance Service. Also helps Foundation Trusts.</b>

Organisation	Area covered	Function
Surrey PCT	Surrey	<p><b>Budget £1.4billion—funded by Dept. of Health</b></p> <p><b>Non-executive Board members appointed by NHS Appointments Commission</b></p> <p><b>Purpose</b></p> <ul style="list-style-type: none"> <li>• <b>engaging with the local population to improve health and well-being;</b></li> <li>• <b>commissioning a comprehensive and equitable range of high quality, responsive and efficient services, within allocated resources, across all service sectors; and</b></li> <li>• <b>directly providing high quality responsive and efficient services where this gives best-value.</b></li> </ul> <p><b>Has overall responsibility for commissioning budget i.e. purchasing services from acute and learning disability/mental health trusts as well as community nursing and therapy health services.</b></p>
Sutton & Merton PCT	London Boroughs of Sutton & Merton	Equivalent responsibilities to Surrey PCT (described above)

Organisation	Area covered	Function
<b>Epsom &amp; Ewell, Banstead and Leatherhead Practice Based Commissioning Group</b>	<b>As in title</b>	<p><b>Practice-based commissioning (PBC) is a policy intended to give more decision-making power over NHS resources to general practitioners (GPs), and allow them to design and deliver completely new services or commission others to do so. It links to a number of other government policy strands, including:</b></p> <ul style="list-style-type: none"> <li>• <b>Patient Choice</b></li> <li>• <b>Payment by Results</b></li> <li>• <b>Supporting people with long term conditions</b></li> </ul> <p><b>However, ultimate responsibility for commissioning rests with the PCT as it is only given a 'notional' budget</b></p>
<b>Epsom Downs Integrated Care Services (EDICS)</b>	<b>Epsom, Ewell, Worcester Park and Banstead</b>	<p><b>Commissioned by PCT/PBCGroup</b></p> <p><b>Assisting GPs when they need to refer patients on to more specialised care. It maintains a database of the referral options available and acts as a gateway into these more specialised NHS services, often in primary care rather than hospital.</b></p>

Organisation	Area covered	Function
<b>Epsom &amp; St Helier University Hospitals NHS Trust</b>	<b>Merton, Sutton and North East Surrey</b>	<b>Annual Budget c.£290m received from Surrey PCT, Merton &amp; Sutton PCT and other PCTs</b> <b>The two main district general hospitals, at Epsom and St Helier, provide a range of acute and specialist services including 24-hour A&amp;E. and maternity and paediatrics</b>
<b>Specialist hospital care — various Trusts</b>	<b>Variable—could be a ‘regional centre’</b>	<b>Provision of specialist/tertiary care. For example cancer care at the Royal Marsden, coronary heart care at St George’s Tooting, etc.</b>
<b>Surrey &amp; Borders Partnership NHS Trust</b>	<b>Surrey and North East Hampshire</b>	<b>Budget c£260m Services commissioned by various PCTs and Social Services authorities</b> <b>Provides health and social care services for people with mental health illness, drug and alcohol addictions and learning disabilities</b>
<b>Central Surrey Health</b>	<b>Old East Elmbridge and Mid Surrey PCT area</b>	<b>Annual budget c£20m—Services commissioned by Surrey PCT</b> <b>A not-for-profit, limited liability company under contract to provide community nursing and therapy services. Also described as a ‘social enterprise’ company</b>